



FLOWBIRD

Urban
Intelligence





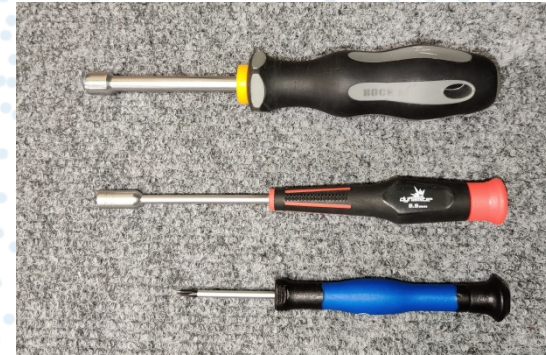
CWT S4 STEALTH TOUCH

Digitizer Replacement

TOOLS NEEDED FOR DIGITIZER REPLACEMENT

Tools needed to complete the CWT Stealth Digitizer replacement

- **7mm Nut Driver**
- **5.5mm Nut Driver**
- **T10 Torx bit**



DIGITIZER REPLACEMENT

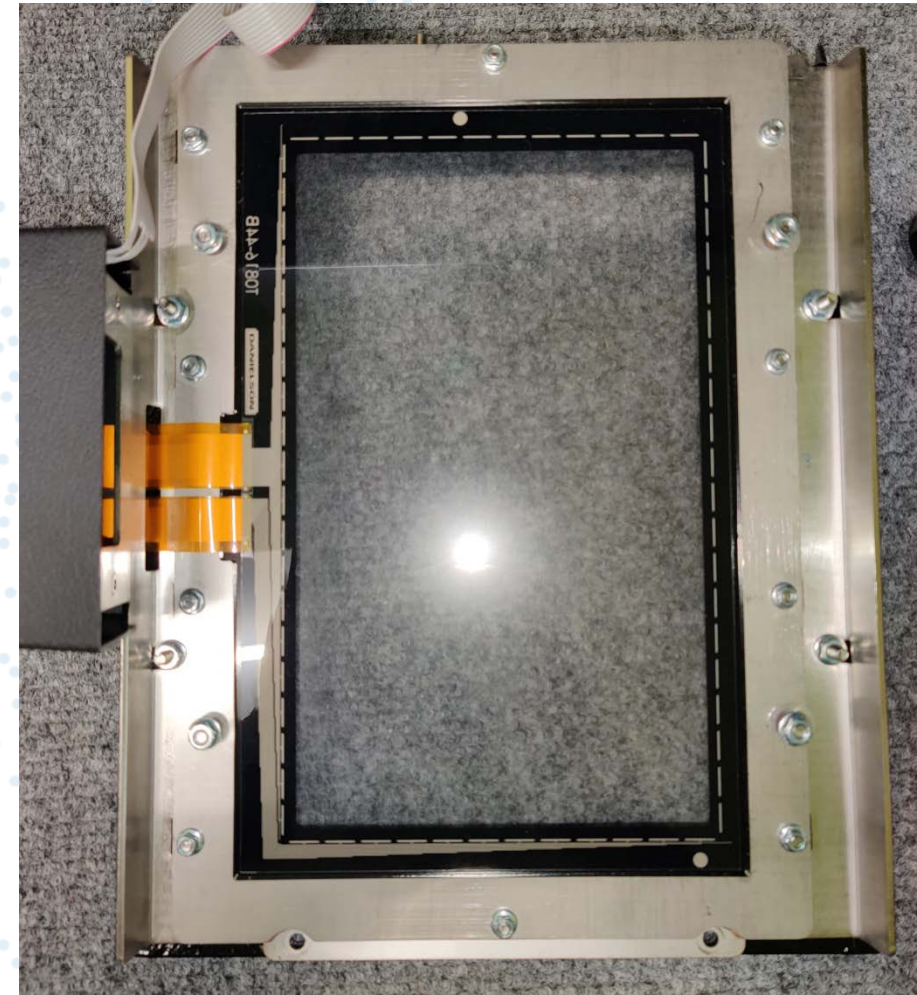
With the S4 Touch cassette removed from the meter we will replace the digitizer.

1. Loosen the four 4mm flanged nuts with the 7mm nut driver that secure the LED Screen in place.



DIGITIZER REPLACEMENT

2. Slid the LED screen up & then lift up to remove from cassette.



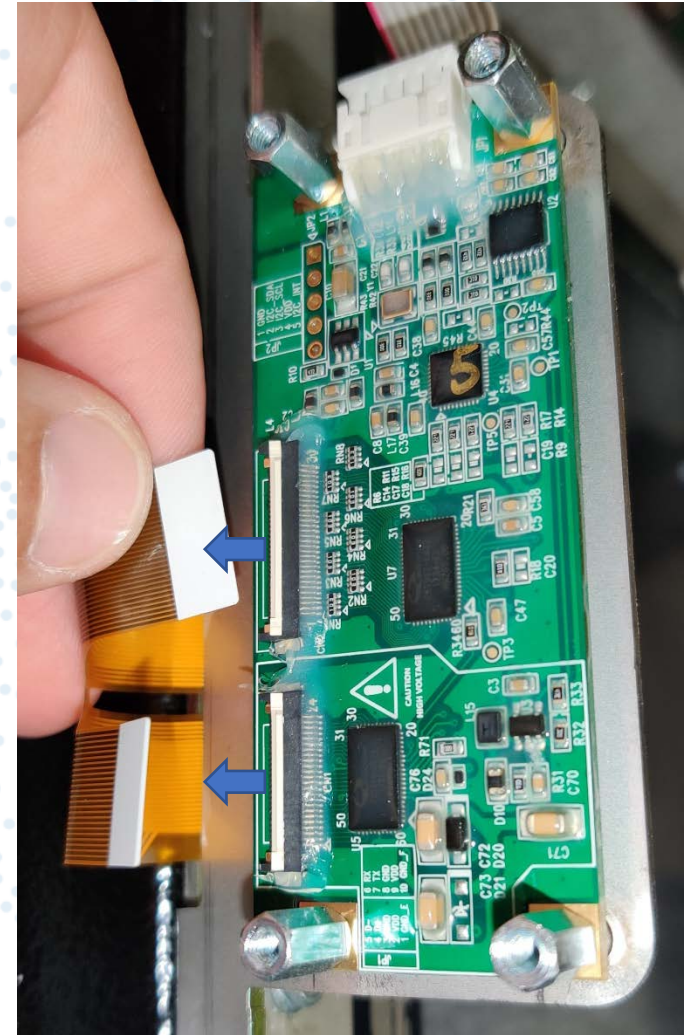
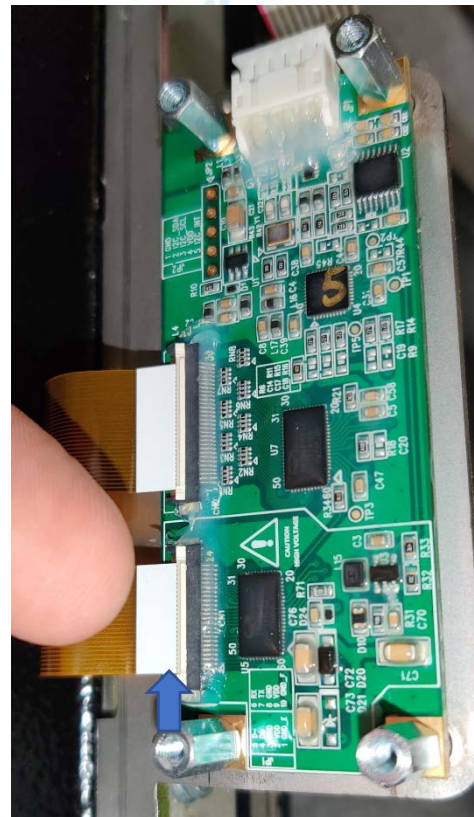
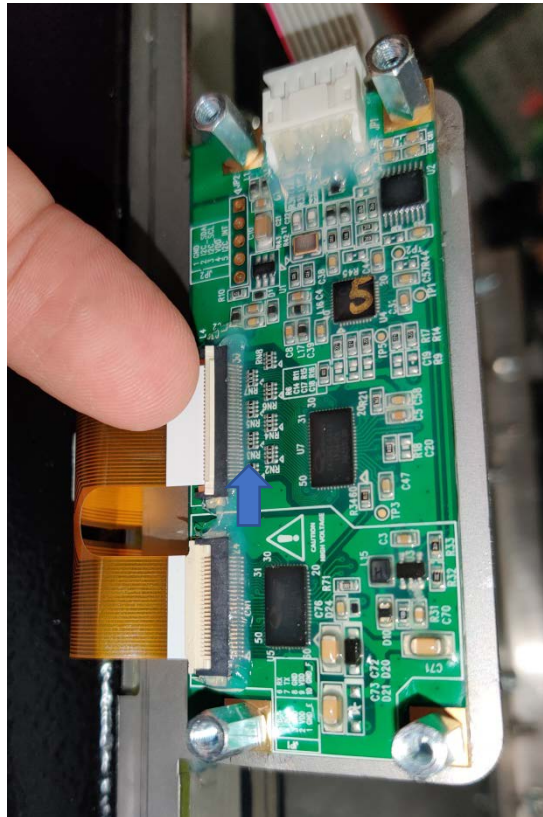
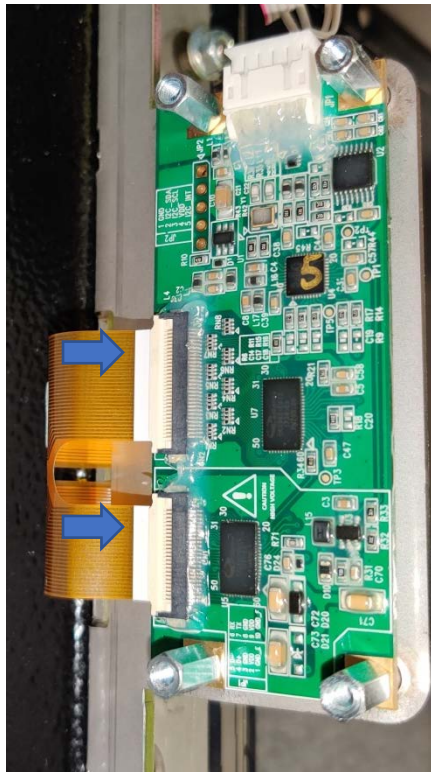
DIGITIZER REPLACEMENT

3. Remove the four T10 screws from the digitizer controller board cover



DIGITIZER REPLACEMENT

4. Unplug the two ribbon cables by lifting up the white tabs & then gently slide out.

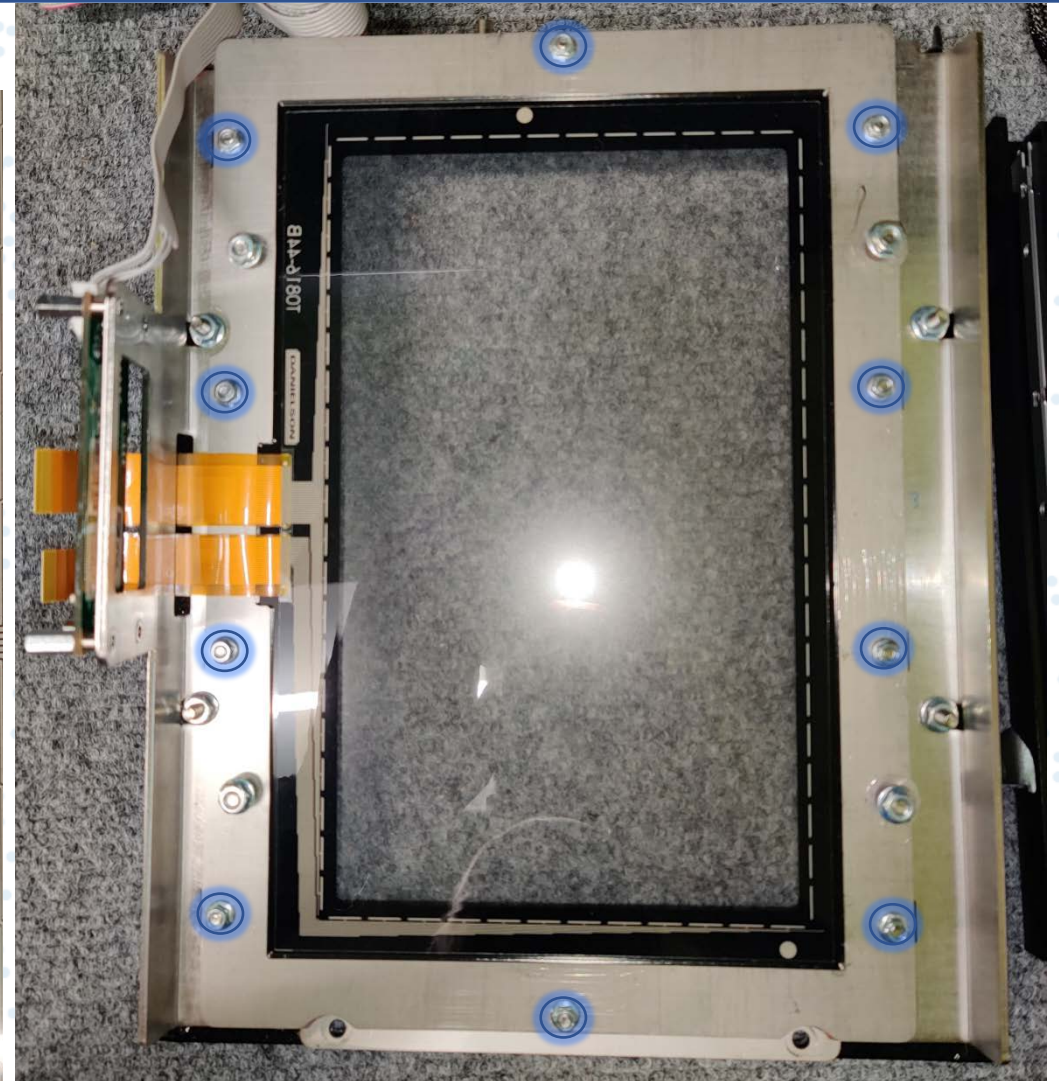
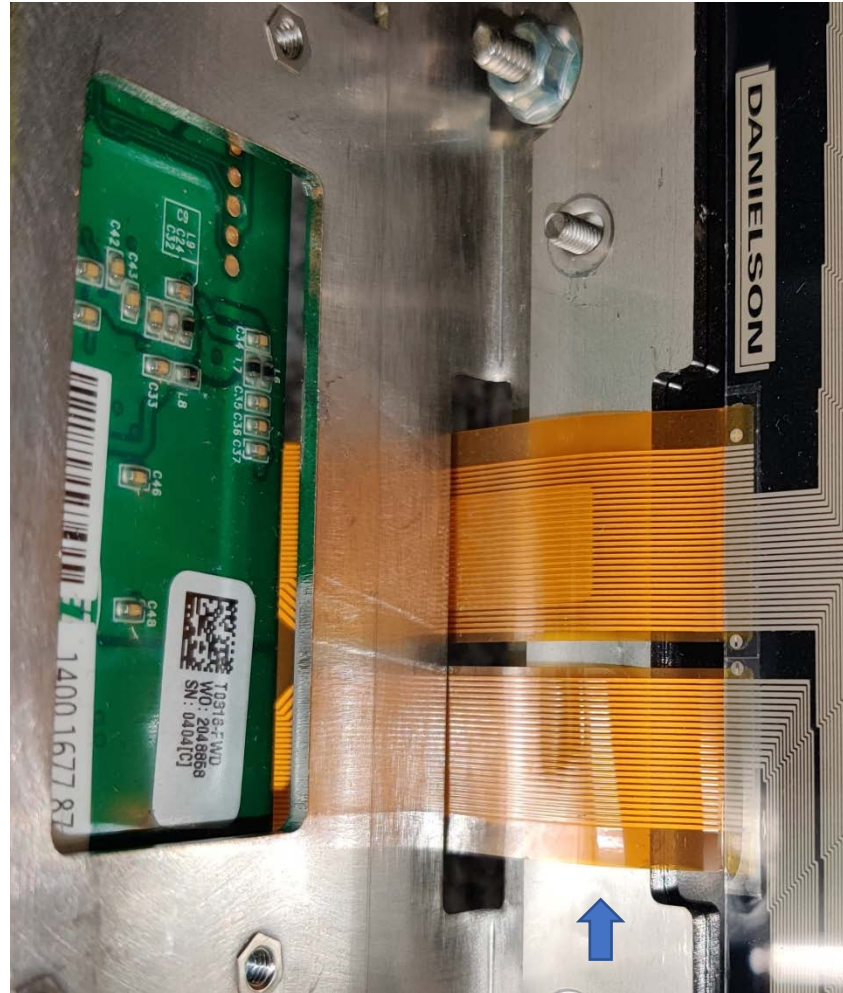


DIGITIZER REPLACEMENT

5. Remove the ten 3mm flanged nuts with the 5.5mm nut drive

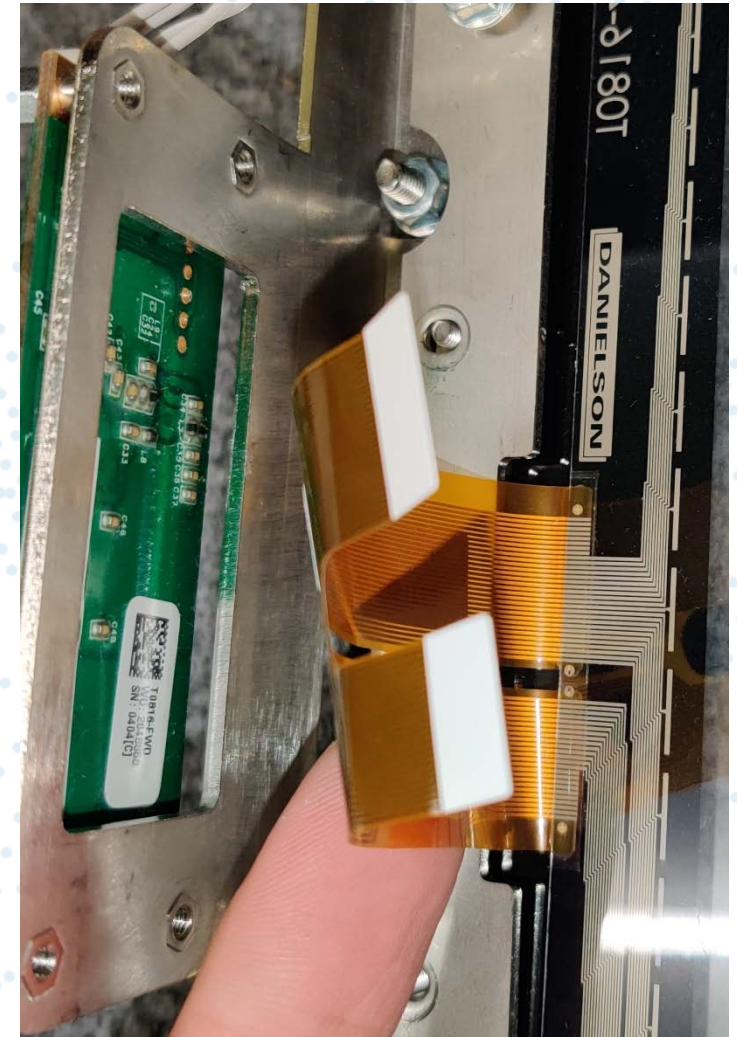
Note the location of the ribbon cable routing.

Over the back plate and through the hole. If it is installed under the back plate it will crush the ribbon cable and will not operate or be able to be repaired



DIGITIZER REPLACEMENT

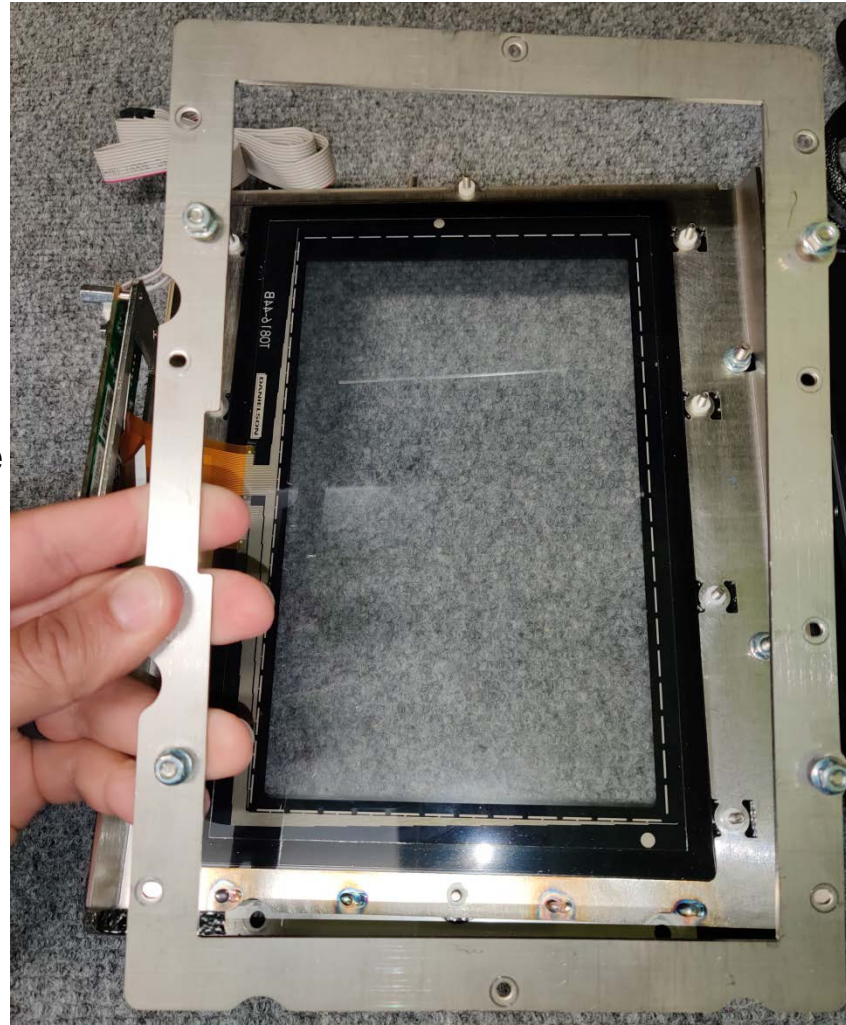
6. Pull the ribbon cable through gently. This cable tears easily.



DIGITIZER REPLACEMENT

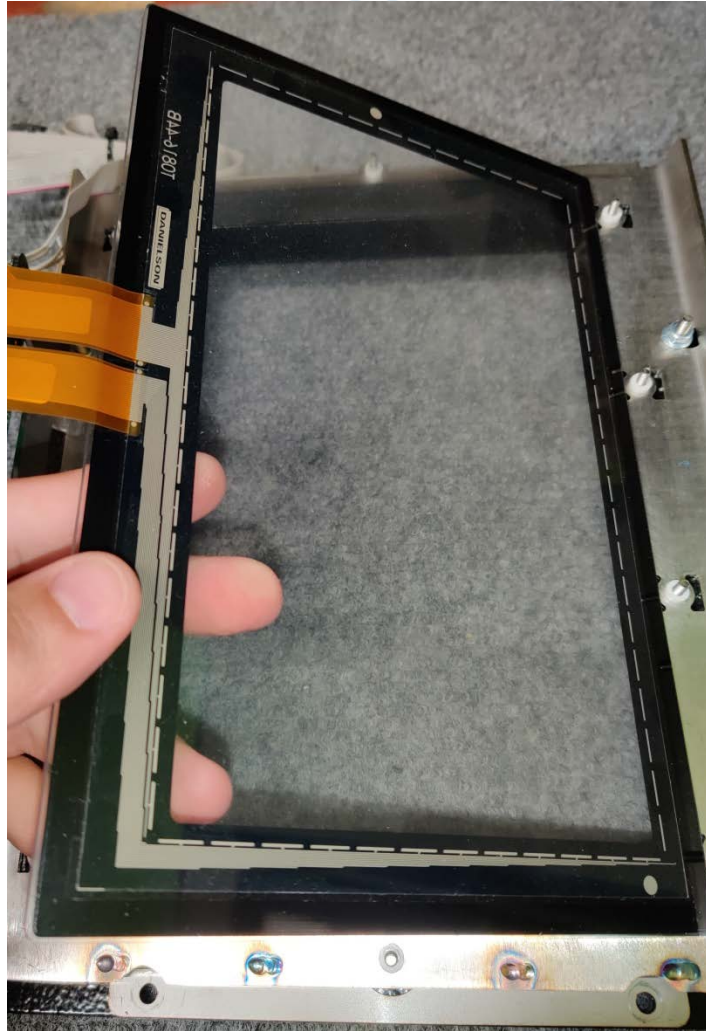
7. Lift digitizer back plate off.

Make sure not to loose the white spacers



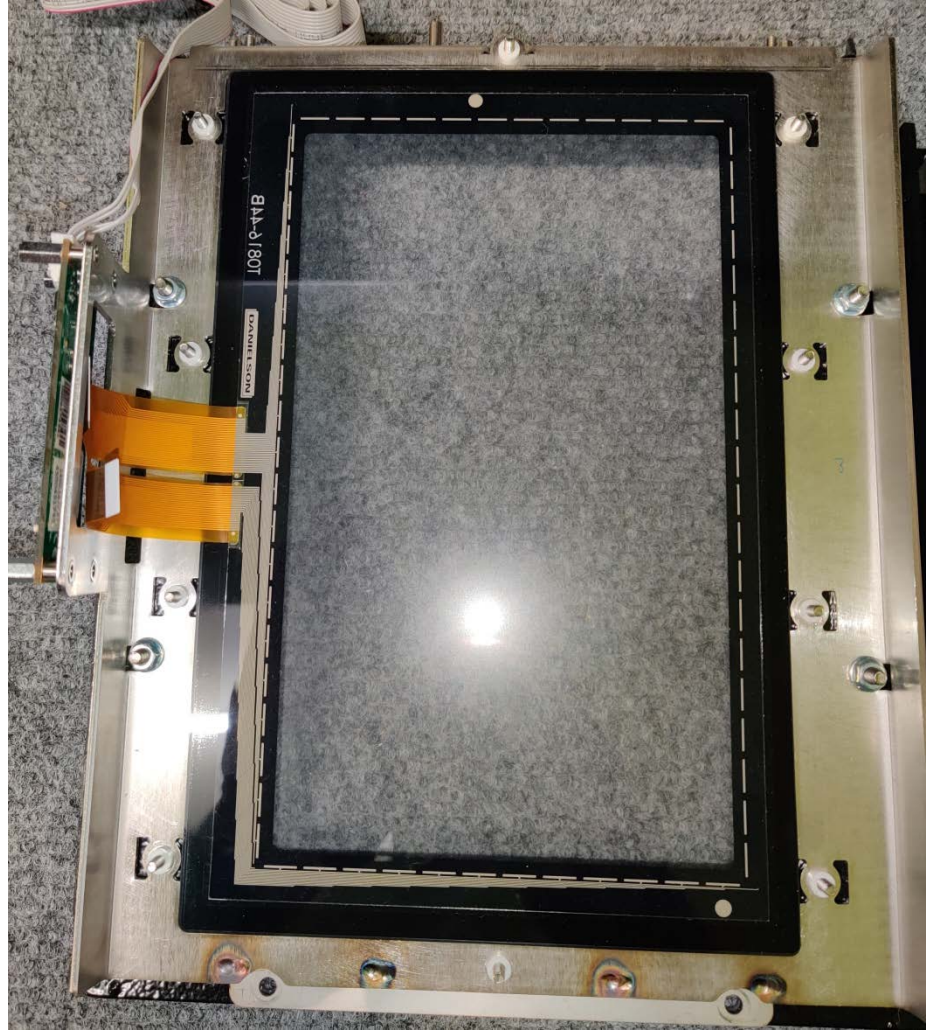
DIGITIZER REPLACEMENT

8. Push digitizer up from the back to remove from the frame.



DIGITIZER REPLACEMENT

9. Place digitizer back on frame on top of the foam gasket.

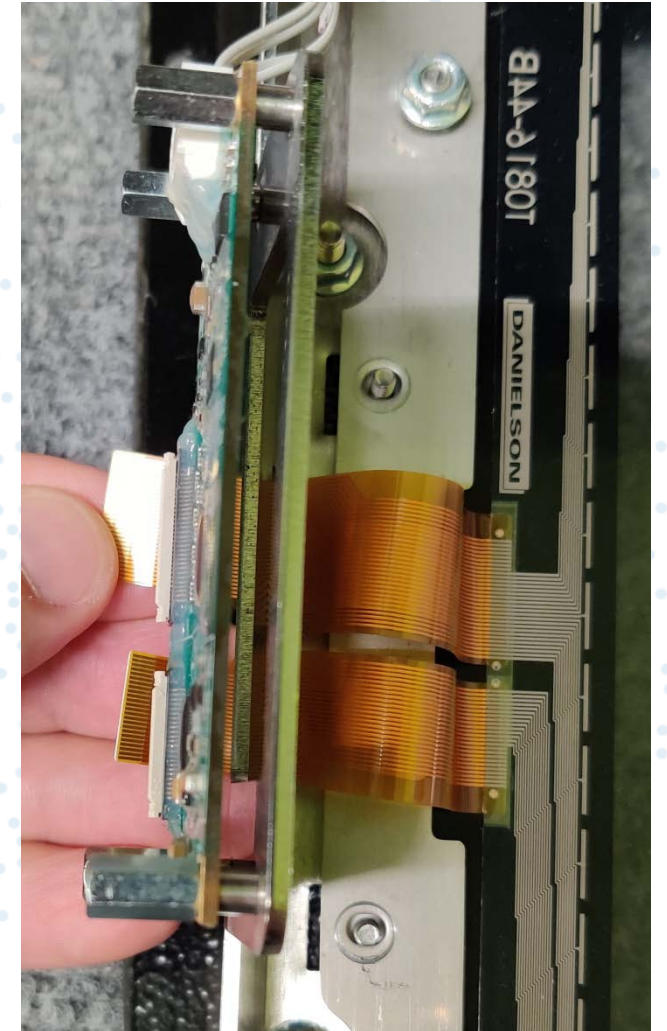
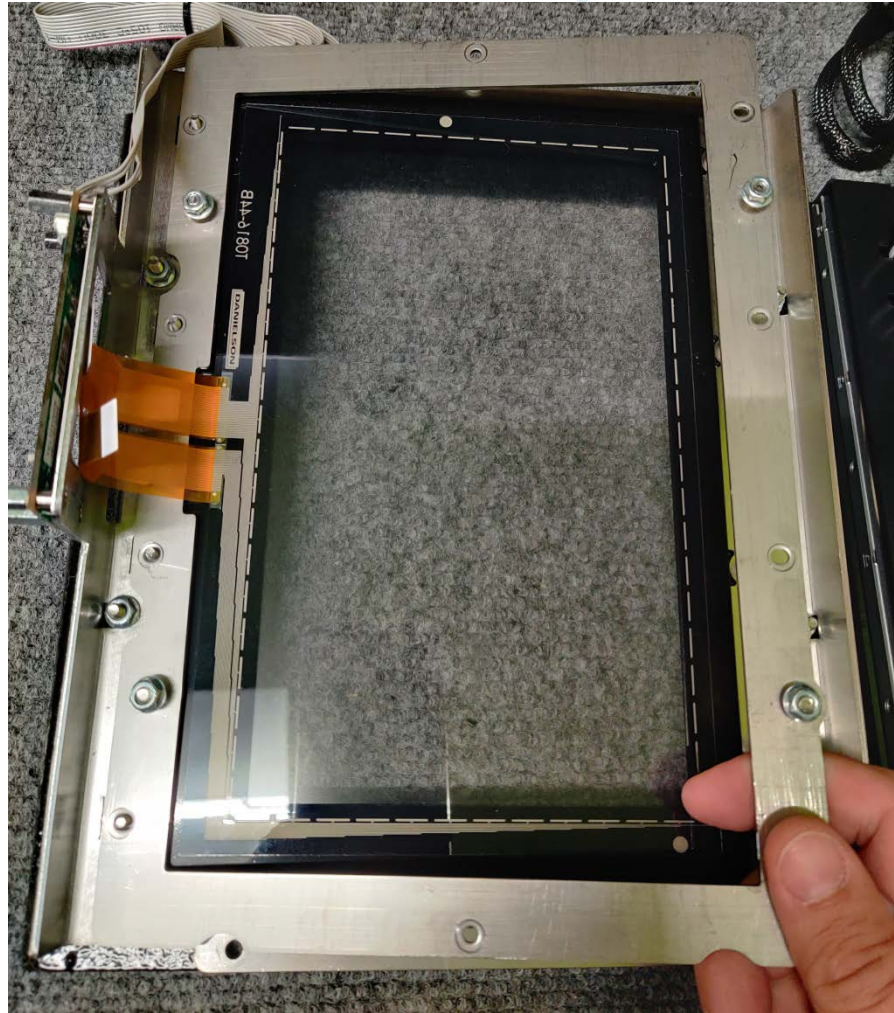


DIGITIZER REPLACEMENT

10. Place digitizer back plate on top of the digitizer.

Make sure the ribbon cable is on top of the back plate.

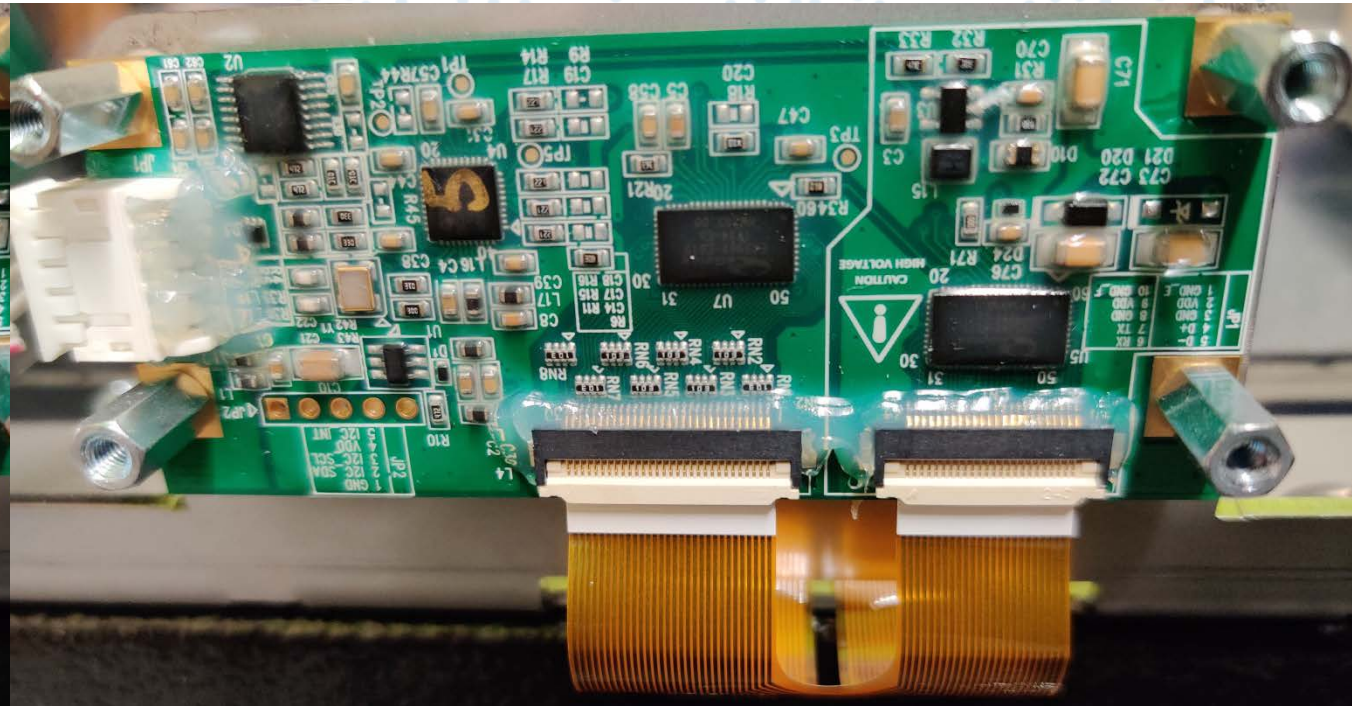
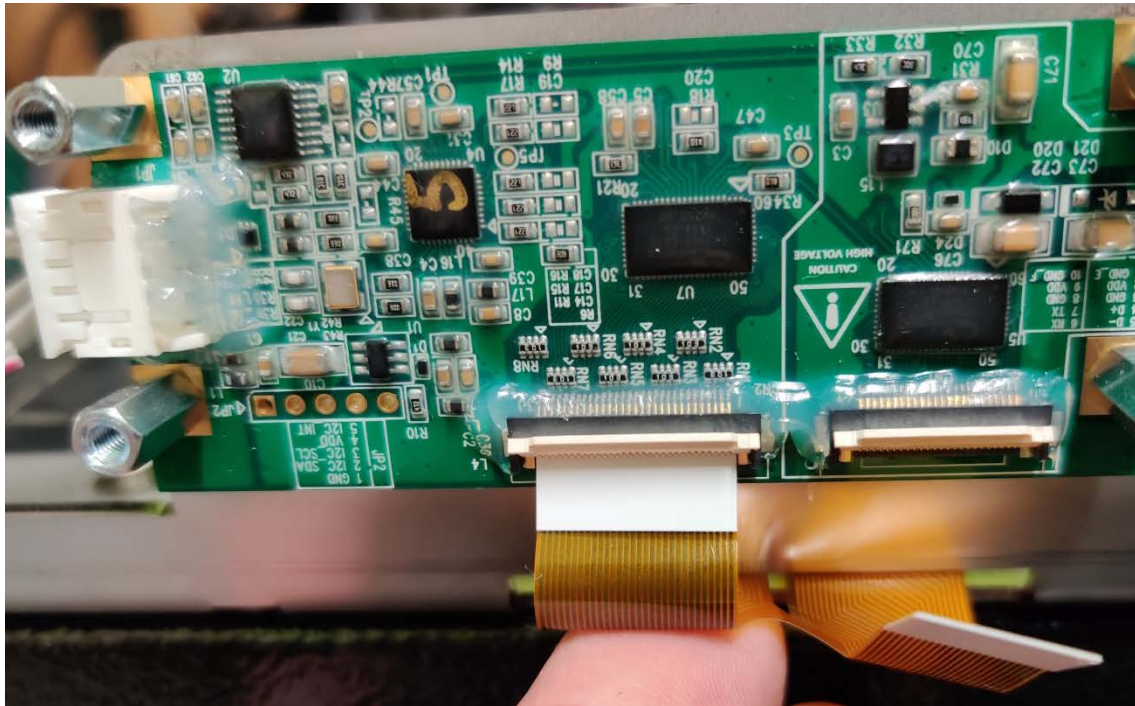
11. Route the ribbon cable through the hole in the frame to under the digitizer controller board



DIGITIZER REPLACEMENT

12. Gently insert the ribbon cables into the two connectors on the controller board

Once inserted close the top on the connectors gently

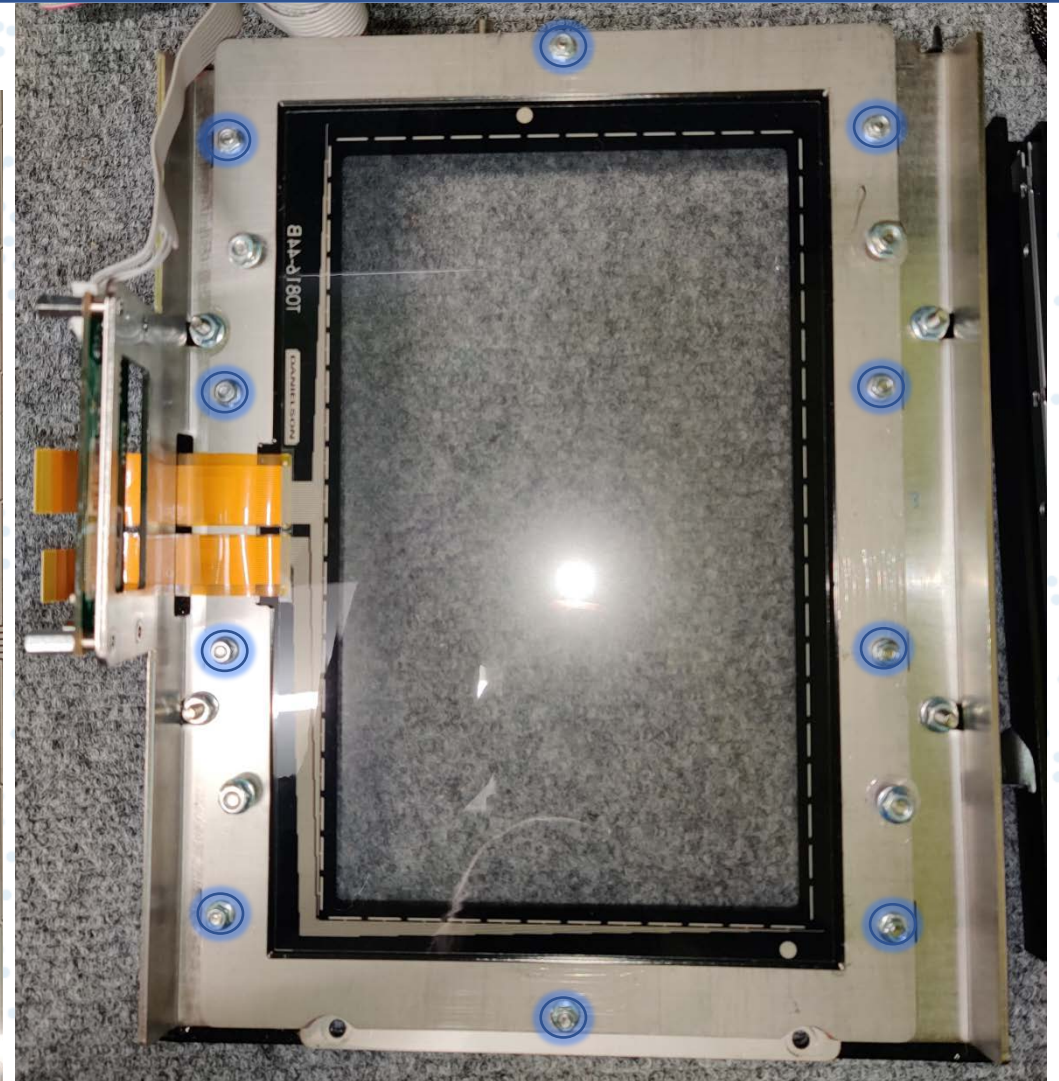


DIGITIZER REPLACEMENT

13. Install the ten 3mm flanged nuts with the 5.5mm nut drive

Note the location of the ribbon cable routing.

Over the back plate and through the hole. If it is installed under the back plate it will crush the ribbon cable and will not operate or be able to be repaired



DIGITIZER REPLACEMENT

14. Slide the LED screen down & then tighten the four 4mm flanged nuts with the 7mm nut driver



DIGITIZER REPLACEMENT

15. Install the four T10 screws into the digitizer controller board cove.

Test on known working mother board & then reinstall touch cassette back on to door for operation

