

Vault door Locks

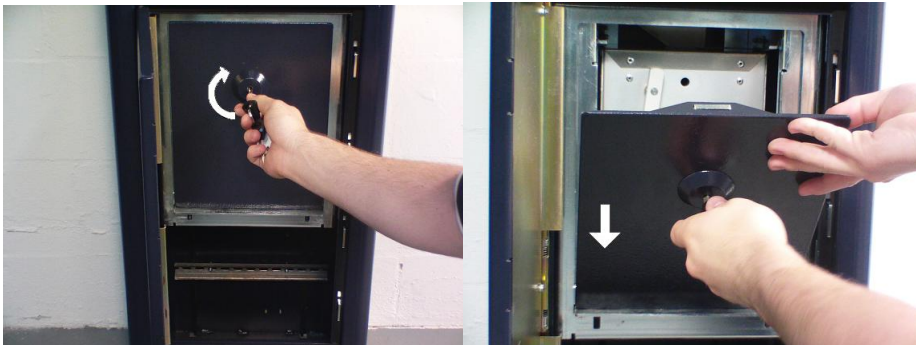
Tools & Parts needed to perform this task:

- 10mm wrench and socket or nut-driver
- 11mm wrench and socket or nut-driver
- Flat-head screwdriver
- Replacement vault door Lock

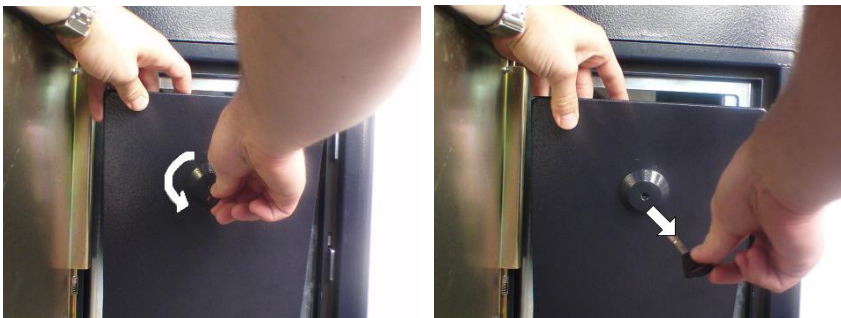
1. Insert bottom cabinet key and turn clockwise, to open the bottom cabinet door.



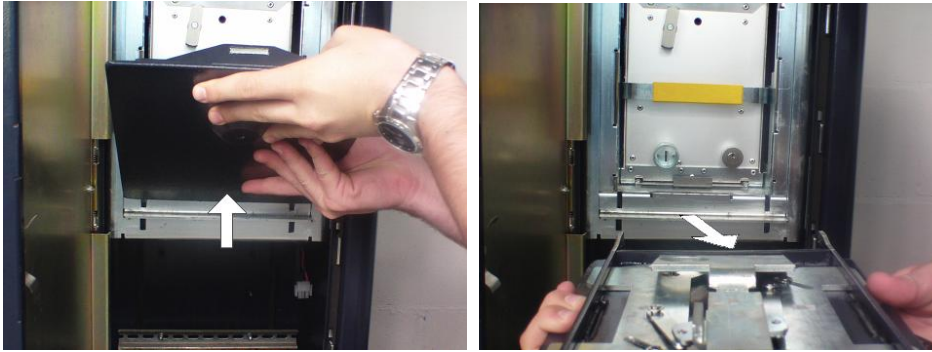
2. Now insert the vault door key into the coin vault door, turn the key clockwise and use your hand to gently drop the coin vault door until it is in a stable position.



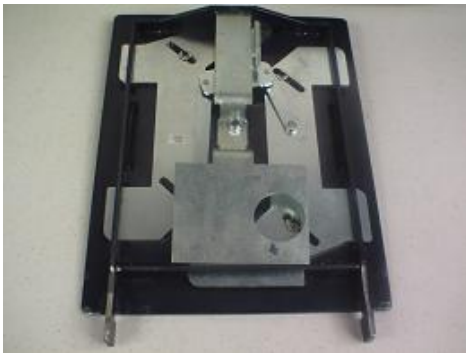
3. Remove the vault door key by turning it counter-clockwise and pulling the key out.



4. Remove the vault from the vault frame. Do this by pushing the bottom of the door up; then pull the door away from the frame.



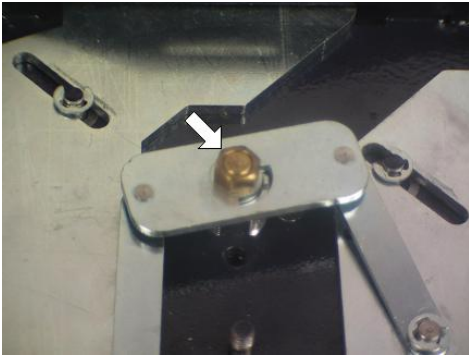
5. Place the door face down.



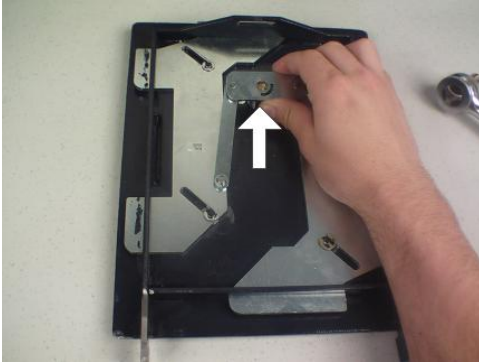
6. Remove the 10mm nut and the metal bar that the 10mm nut secures down.



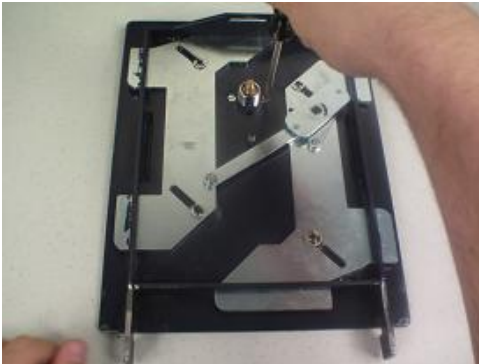
7. Remove the 11mm nut.



8. Lift up on the lever assembly arm and move it to the right.



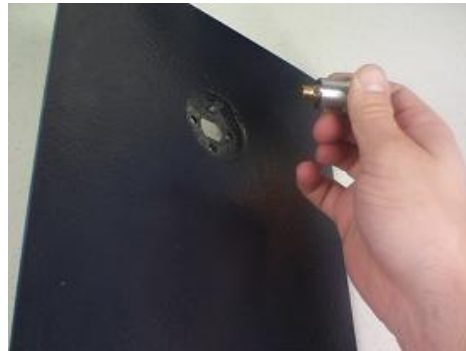
9. Unscrew the two screws that are located to the left and right of the lock.



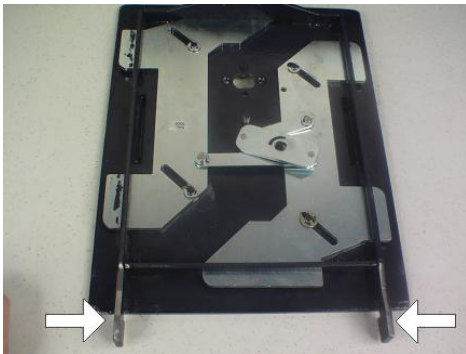
10. Once the screws are removed, pick the vault door up off its face. Be careful because the bezel and the lock are not secured to the door and may easily fall.



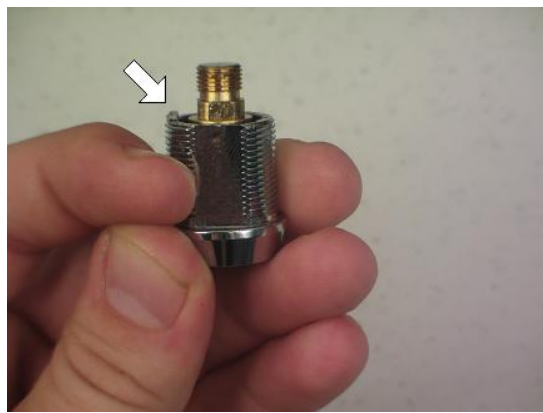
11. Push on the lock, which will remove it and the bezel from the vault.



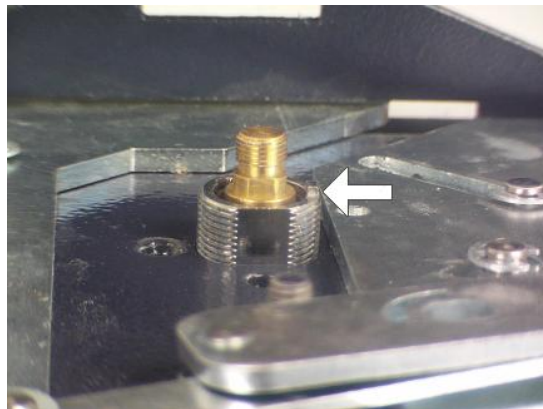
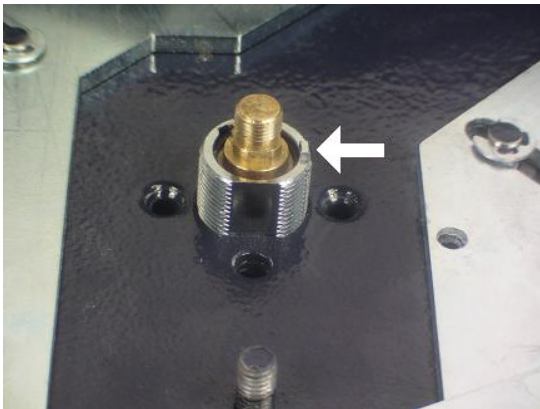
12. Now that the old lock has been removed, a new lock can be installed. Start by orienting the vault door so that the hinge hooks are at the bottom.



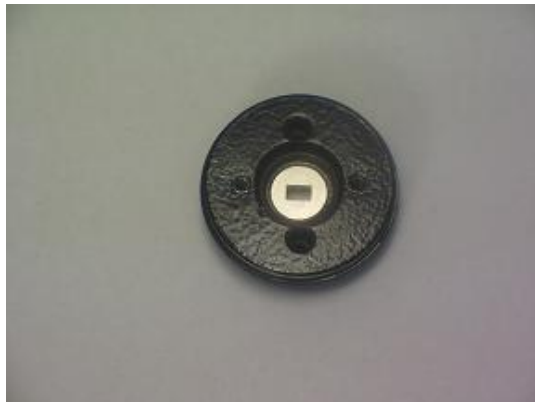
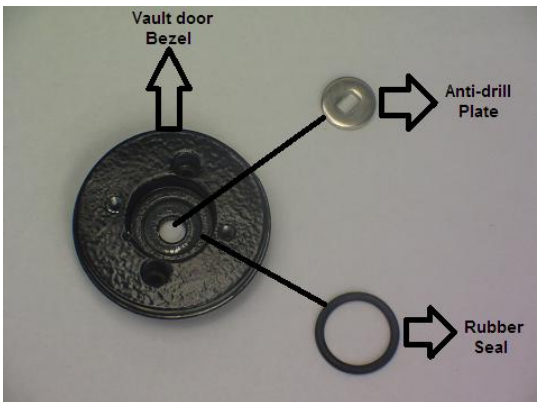
13. Now locate the metal tab on the backside of the lock.



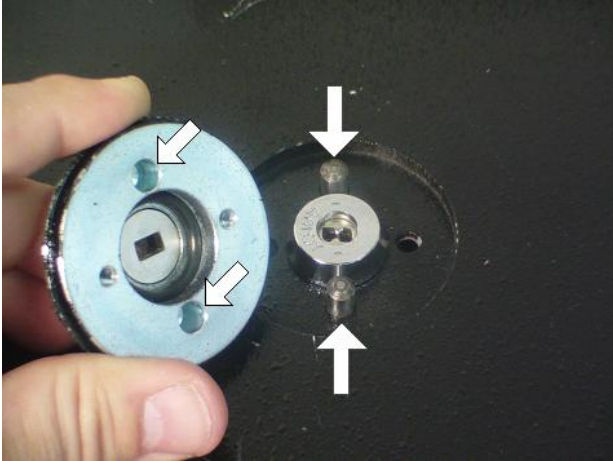
14. Insert the lock into the vault door. Make sure that the metal tab is on the **right** side of the lock.



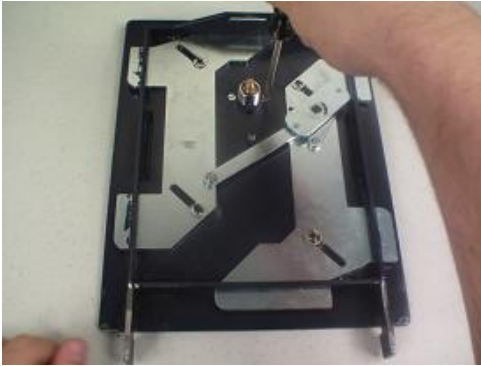
15. Verify that the bezel still has all of its components. There should be an anti-drill plate and a rubber seal.



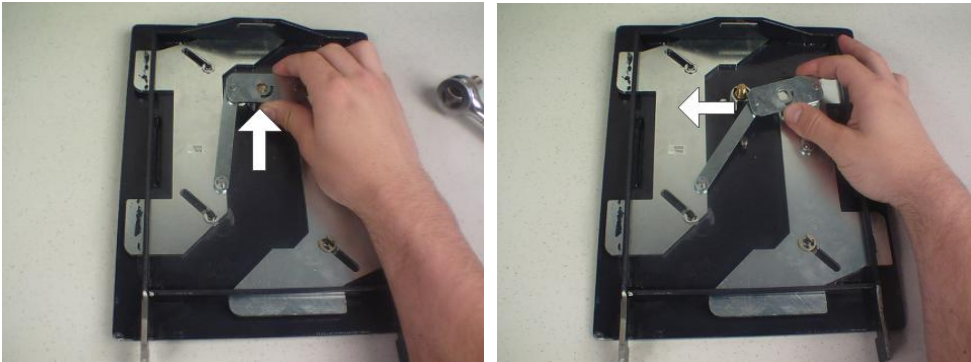
16. Reinstall the bezel back on to the vault door. Line up the studs on the vault door with bigger holes on the bezel. You can also line up the threaded holes on the bezel with the drilled out holes on the vault door.



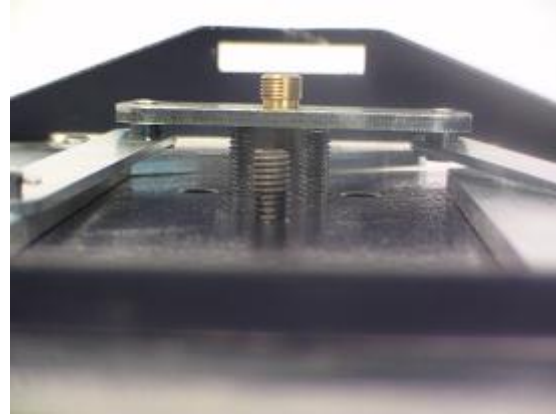
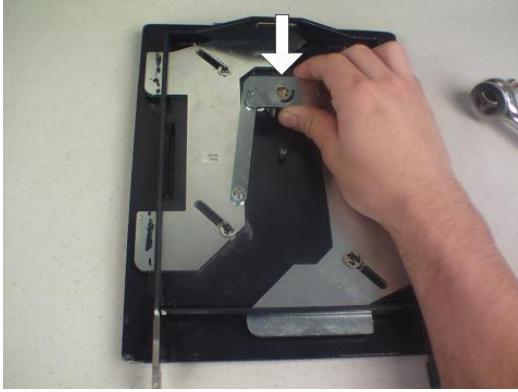
17. Screw down the two screws to secure the lock and the bezel.



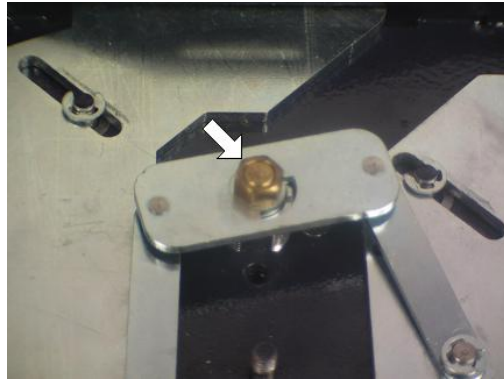
18. Pull up and swing the lever assembly arm back over the lock.



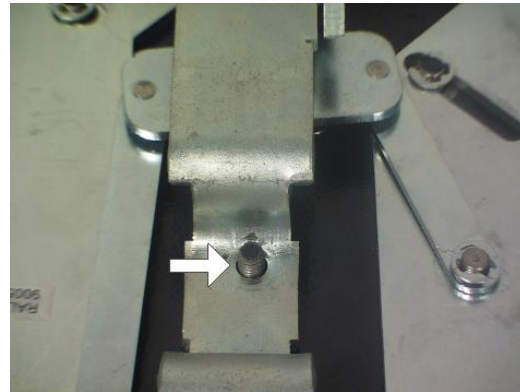
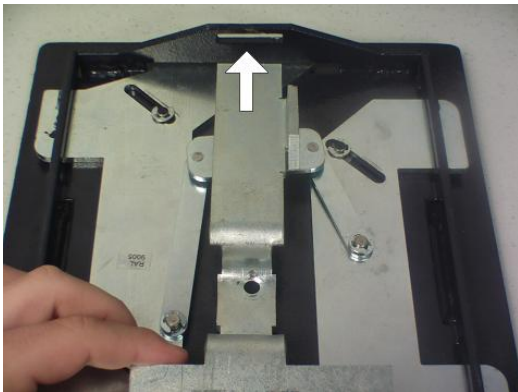
19. Push the lever assembly arm down onto the lock. Make sure that the lever assembly is flush with the lock. Also make sure that the metal tab on the lock is not underneath the metal plate.



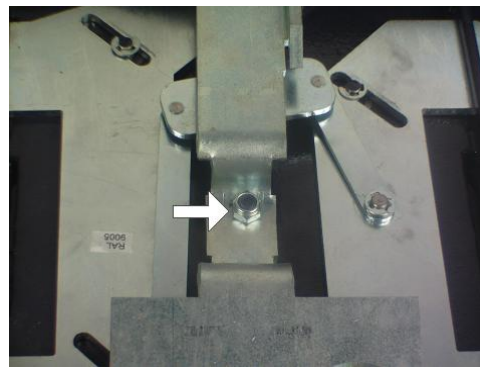
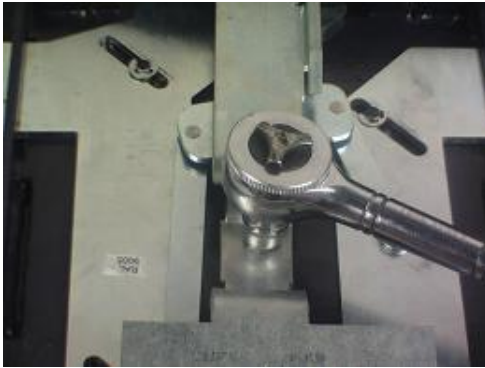
20. Reinstall and tighten down the 11mm nut. Do not torque the nut down the 11mm nut; doing so will cause the lock not to spin.



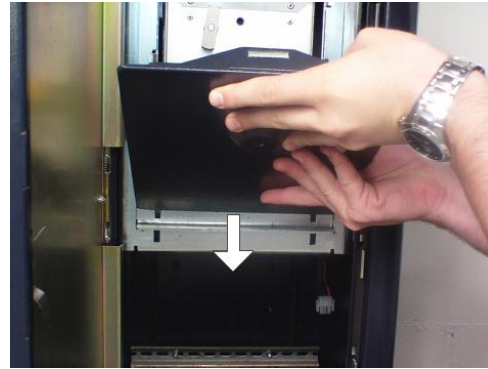
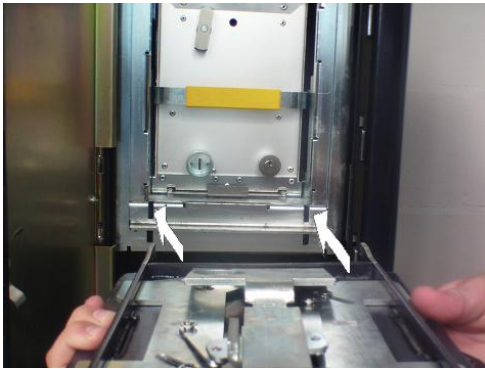
21. Take the metal bar and slide the one end into position, then lower it into place. The stud on the vault door should insert into the hole on metal bar.



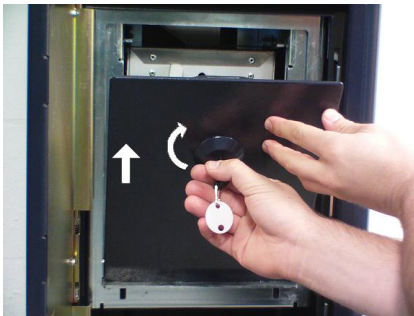
Reinstall and tighten down the 10mm nut.



22. Reinstall the vault door back onto the vault frame.



23. Insert the vault door key and turn it clock-wise.



24. Shut the vault door and lock it by turning the key counter-clockwise.

