

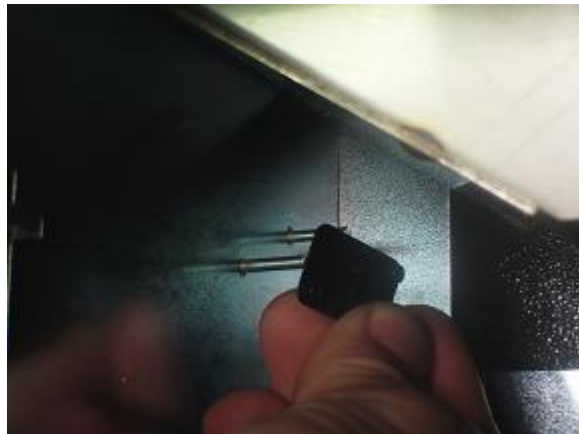
A. Remove the two 5.5 mm lock nuts that hold the collection switch in place.



B. Place a flat head screwdriver behind the collection switch; slowly and carefully pry the collection off of the studs by turning the screwdriver from side to side.



C. It is possible that the back of the collection switch will remain on the two studs. Make sure that the back plate of the collection switch is removed.

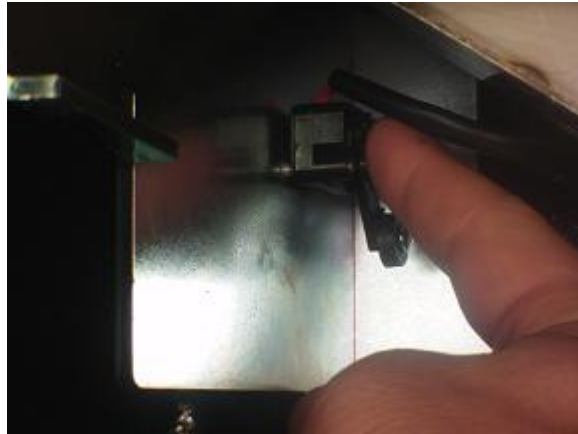


To install a collection switch; follow these steps.

- A. Line the two holes on the collection switch with the two studs in the coin box cage.



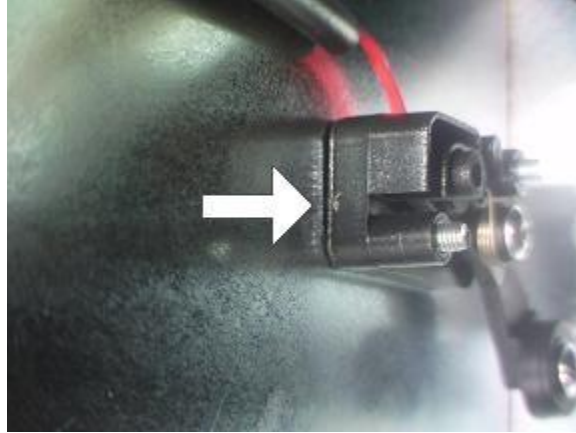
- B. Push on the collection switch as much as possible.



- C. It may be necessary to push on the collection switch with a flathead to seat it properly.



- D. Make sure that the collection switch is flush with the coin box cage.



E. Install and tighten the 5.5 mm nuts to secure the collection switch in place.

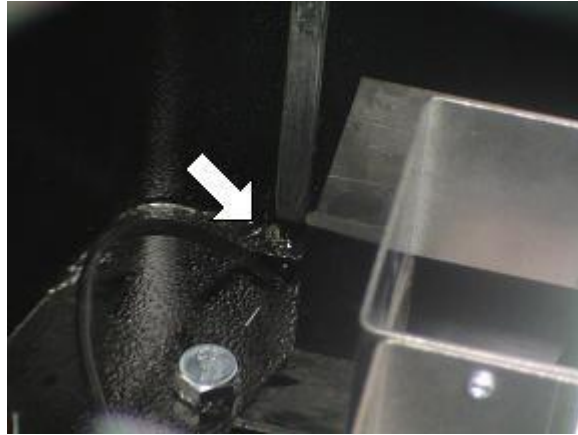


F. Verify that the collection switch is wired through-out the meter correctly.

- The wire coming from the collection switch is first run through the back of the coin box cage.



- The wire then must be brought through a hole in the back left hand corner of the upper cabinet.



- The collection wire and the intermediate wire are now connected and kept off the bottom of the top cabinet with a clip or zip-tie.